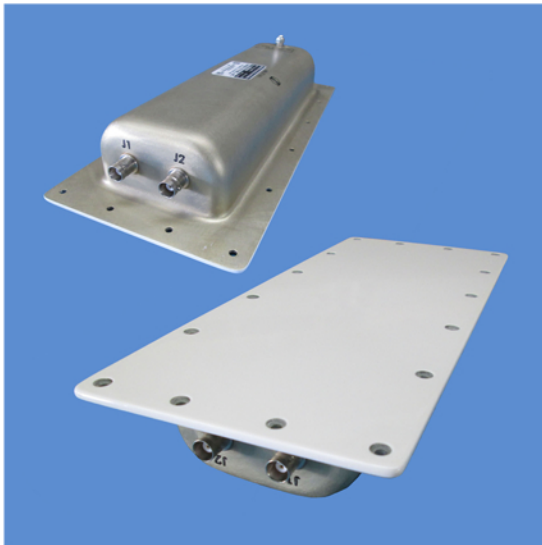


# Marker Beacon S35-3000-14



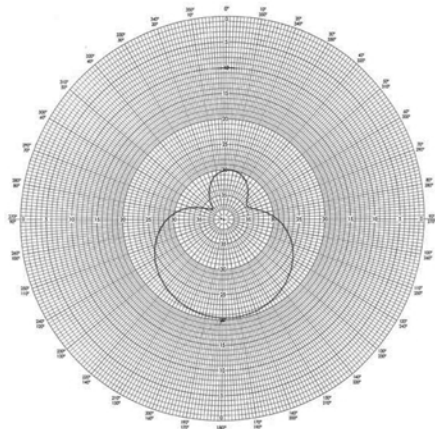
## DESCRIPTION

**S35-3000-14:** Flush-mount Marker Beacon antenna operating at 75 MHz. The unit features a hermetically-sealed construction consisting of a foam-filled, drawn aluminum housing with an epoxy glass radome. It is DC-grounded to withstand lightning strikes. Two side-mounted BNC female connectors for redundant marker beacon installations eliminate the need for a splitter.

Interchangeable with Comant CI-165.

**FEDERAL & MILITARY SPECS:** DO-143. DO -160G, MIL-STD-810D.

## RADIATION PATTERN



SPECIFICATIONS	
<b>MODEL</b>	<b>S35-3000-14</b>
<b>ELECTRICAL</b>	
<b>Frequency</b>	75 MHz
<b>VSWR</b>	≤1.5:1 @ 75 MHz ≤5.0:1 @ 75.00± .15 MHz
<b>Pattern</b>	Single downward lobe
<b>Polarization</b>	Horizontal
<b>Impedance</b>	50 ohms
<b>Gain</b>	-10 dBi
<b>MECHANICAL</b>	
<b>Weight</b>	1.1 lbs
<b>Height</b>	Flush
<b>Length</b>	12.0 in.
<b>Width</b>	5.0 in.
<b>Material</b>	Alum. Alloy Cavity / Fiberglass Radome
<b>Finish</b>	Skydrol-resistant Polyurethane Enamel
<b>Connector</b>	BNC Female (2)
<b>Drag</b>	Flush
<b>ENVIRONMENTAL</b>	
<b>Temperature</b>	-55°C (-67°F) to +85°C (+185°F)
<b>Vibration</b>	10 Gs
<b>Altitude</b>	50,000 ft.

